



Nectin 2 Polyclonal Antibody

| | |
|---------------------------|--|
| Catalog No | YP-Ab-17102 |
| Isotype | IgG |
| Reactivity | Human;Rat;Mouse; |
| Applications | WB;ELISA |
| Gene Name | PVRL2 |
| Protein Name | Poliovirus receptor-related protein 2 |
| Immunogen | Synthesized peptide derived from Poliovirus receptor-related protein 2 at AA range: 151-200 |
| Specificity | Nectin 2 Polyclonal Antibody detects endogenous levels of Nectin 2 protein. |
| Formulation | Liquid in PBS containing 50% glycerol, 0.5% BSA and 0.02% sodium azide. |
| Source | Polyclonal, Rabbit,IgG |
| Purification | The antibody was affinity-purified from rabbit antiserum by affinity-chromatography using epitope-specific immunogen. |
| Dilution | Western Blot: 1/500 - 1/2000. ELISA: 1/10000. Not yet tested in other applications. |
| Concentration | 1 mg/ml |
| Purity | ≥90% |
| Storage Stability | -20°C/1 year |
| Synonyms | PVRL2; HVEB; PRR2; Poliovirus receptor-related protein 2; Herpes virus entry mediator B; Herpesvirus entry mediator B; HveB; Nectin-2; CD112 |
| Observed Band | 65kD |
| Cell Pathway | Cell membrane; Single-pass type I membrane protein. |
| Tissue Specificity | Ubiquitous. |
| Function | function:Probable cell adhesion protein.,similarity:Belongs to the nectin family.,similarity:Contains 1 Ig-like V-type (immunoglobulin-like) domain.,similarity:Contains 2 Ig-like C2-type (immunoglobulin-like) domains.,subunit:Can form trans-heterodimers with PVRL3/necl-3 (By similarity). Interacts with CD226. Receptor for alphaherpesvirus (HSV-1, HSV-2 and pseudorabies virus) entry into cells. Binds with low affinity to TIGIT.,tissue specificity:Ubiquitous., |
| Background | This gene encodes a single-pass type I membrane glycoprotein with two Ig-like C2-type domains and an Ig-like V-type domain. This protein is one of the plasma membrane components of adherens junctions. It also serves as an entry for certain mutant strains of herpes simplex virus and pseudorabies virus, and it is involved in cell to cell spreading of these viruses. Variations in this gene have been associated with differences in the severity of multiple sclerosis. Alternate |



transcriptional splice variants, encoding different isoforms, have been characterized. [provided by RefSeq, Jul 2008],

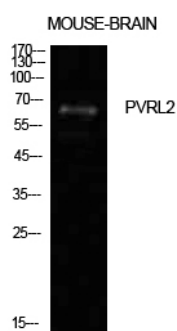
matters needing attention

Avoid repeated freezing and thawing!

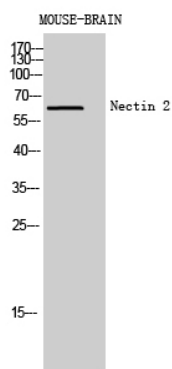
Usage suggestions

This product can be used in immunological reaction related experiments. For more information, please consult technical personnel.

Products Images



Western Blot analysis of mouse brain cells using Nectin 2 Polyclonal Antibody. Antibody was diluted at 1:500. Secondary antibody(catalog#:RS0002) was diluted at 1:20000



Western Blot analysis of MOUSE-BRAIN cells using Nectin 2 Polyclonal Antibody diluted at 1:500. Secondary antibody(catalog#:RS0002) was diluted at 1:20000